

# PARENT UNIVERSITY: WEEK 3



- **WHICH COLLEGE IS  
RIGHT FOR ME?**
- **HOW DO I PAY FOR  
COLLEGE?**

# The College System

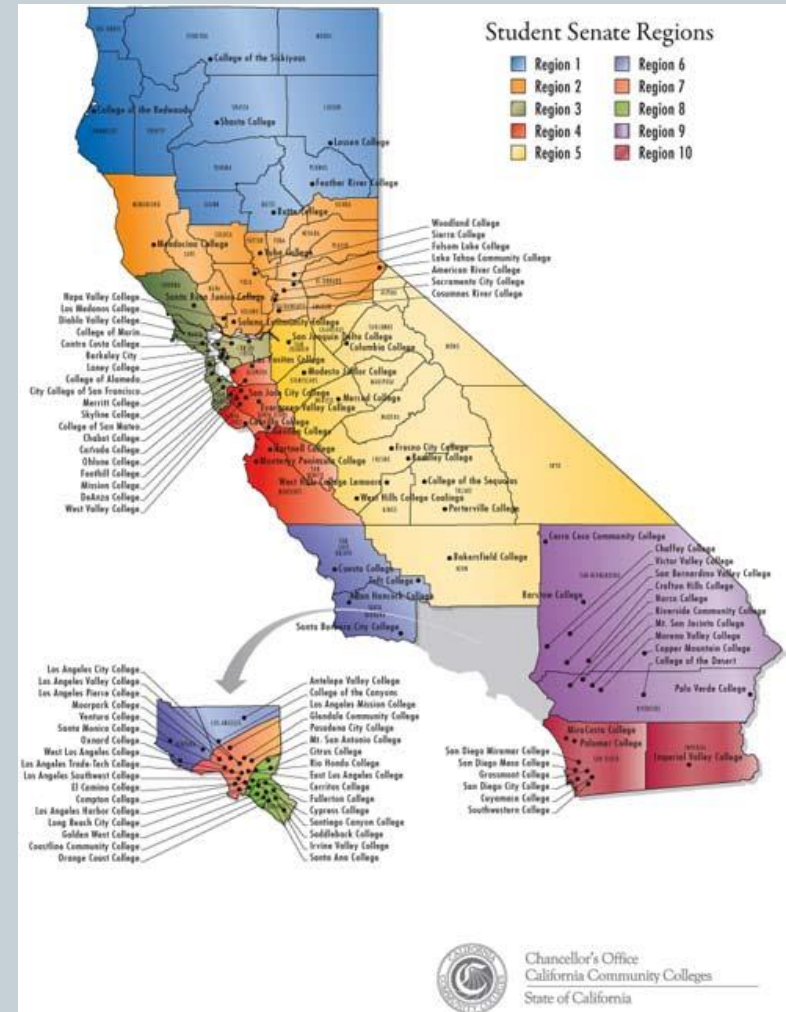


- **CCC – California Community College**
- **CSU – California State University (top 33% of students)**
- **UC – University of California (top 10% of students)**
- **Independent Colleges and Universities**
- **WICHE/WUE**
- **Out-of-State**

# California Community Colleges: CCC

- 112 community college campuses throughout California
- lower division requirements (Associate degree program)
- no GPA requirement
- approximately \$3,148 per year
  - ✦ tuition: \$1,438
  - ✦ books: \$ 1,710
- Honors program (3.0 +)
- vocational and certificate education programs

Fun Fact: 60% of students who received their bachelor's degree at California State University and 30% of students who graduated from a UC school started their education at a CCC.



# California State University - CSU

**Apply: October 1 – November 30**

**csumentor.edu**

- **CSU – California State University (top 33% of students)**
  - approximately \$6,100 per year
  - 23 campuses throughout California
  - admissions based on A-G courses (15 unit pattern of study), GPA, and test scores
  - approximate GPA: 3.0 +++
    - students with GPA below 2.0 do not qualify
    - minimum eligibility index
      - 2900 SAT or 694 ACT
      - higher for some schools and majors
      - SAT (scores in mathematics and critical reading) + (800 x high school GPA)
      - (10 x ACT composite score without the writing score) + (200 x high school GPA)
      - no personal statement required
  - CSU Mentor – web based resource to learn about the Cal State System
    - [www.csumentor.edu](http://www.csumentor.edu)



# University of California - UC

**Apply: November 1 – 30**

**universityofcalifornia.edu**

- **UC – University of California (top 10% of students)**
  - approximately \$13,300 per year (tuition only)
  - 9 campuses throughout California
  - approximate GPA - 3.8 or higher
  - students with GPA below 3.0 do not qualify
  - admissions based on a **COMPREHENSIVE REVIEW** process (14 criteria, first 6 are listed below)
    - academic GPA in A-G courses
    - test scores (SAT or ACT)
    - number of, content of, and performance in academic courses beyond minimum requirement
    - number of, and performance in, honors/AP courses
    - quality of senior year courses
    - quality of student's academic performance relative to the educational opportunities at his or her high school
  - specific SAT Subject Tests may be recommended for competitive majors on some campuses to demonstrate subject proficiency.
    - For details visit:  
[admission.universityofcalifornia.edu/freshman/requirements/examination-requirement/SAT-subject-tests](http://admission.universityofcalifornia.edu/freshman/requirements/examination-requirement/SAT-subject-tests).
  - requires personal statement



# Cost of Attendance

## CSU

## UC

### 2015-2016 Cost of Attendance

The average student expenses will vary from student to student depending on his/her living arrangements and individual needs. The tables below provide the **estimated** amounts for the **2015-2016 academic year attendance**; however, the actual costs may differ on an individual basis.

**Please note, all tuition and fees should be considered as estimates and are current at the time of publication. Tuition and Fees are subject to change without prior notification.**

Undergraduate > California Resident Students			
	Commuter	On-Campus	Off-Campus
Tuition and Mandatory Fees*	\$ 6,344	\$ 6,344	\$ 6,344
Books and Supplies	\$ 1,880	\$ 1,880	\$ 1,880
Room and Board	\$ 4,770	\$ 12,834	\$ 13,434
Miscellaneous/Personal	\$ 1,392	\$ 1,392	\$ 1,392
Transportation	\$ 1,485	\$ 1,380	\$ 1,446
<b>TOTAL</b>	<b>\$ 15,851</b>	<b>\$ 23,810</b>	<b>\$ 24,476</b>

\*Graduate/Post-Baccalaureate Tuition and Mandatory Fees total \$7,008.  
Credentialed Tuition and Mandatory Fees total \$7,218.

Undergraduate > Non-Resident Students			
	Commuter	On-Campus	Off-Campus
Tuition and Fees*	\$ 15,272	\$ 15,272	\$ 15,272
Books and Supplies	\$ 1,880	\$ 1,880	\$ 1,880
Room and Board	\$ 4,770	\$ 12,834	\$ 13,434
Miscellaneous/Personal	\$ 1,392	\$ 1,392	\$ 1,392
Transportation	\$ 1,485	\$ 1,380	\$ 1,446
<b>TOTAL</b>	<b>\$ 24,779</b>	<b>\$ 32,738</b>	<b>\$ 33,404</b>

Non-resident students are assessed an additional \$248 per unit

The standard budget listed above assumes enrollment in 12 units each quarter (36 units total for the academic year)

\*Graduate/Master's students enrolling in specific business and economic courses will be assessed a professional program fee at \$160 per unit in addition to basic tuition and fees.

Please visit the Cashier's Office at <http://www.calstateela.edu/Univ/sfinse/index.php> for quarterly tuition fee information.

### Paying for UC

Apply for financial aid

How aid works

What's available for you

Tuition & cost of attendance

AB 540 nonresident tuition exemption

Glossary

### Tuition and cost of attendance

When UC estimates what college will cost each year, we consider all the expenses associated with being a student: tuition and fees, food, housing, transportation, and books and supplies. But this figure, the total cost of attendance, or "sticker price," is not what most students pay. Over two-thirds of UC undergraduates receive some gift aid, with an average award of over \$16,000. For California residents, that covers nearly half the cost of attending UC for a full year.

Your **net cost**, or the actual amount you will have to pay, may be less than you think. To get a better sense of what your net cost might be, see [Estimate your aid](#).

### Estimated average costs for California residents, 2016-17

This chart estimates the cost of attending UC for one year as a California resident undergraduate. For a significant proportion of our students, these expenses are offset by grants and scholarships.

Keep in mind that your total cost will vary depending on your personal expenses and the campus you attend.

	Living on campus	Living off campus
Tuition and fees*	\$13,500	\$13,500
Books and supplies	\$1,500	\$1,500
Health insurance allowance/fee	\$2,300	\$2,300
Room and board	\$14,500	\$9,800
Personal/transportation	\$2,400	\$3,200
<b>TOTAL</b>	<b>\$34,200</b>	<b>\$30,300</b>

\* California resident undergraduates at all UC campuses pay the same \$12,294 in systemwide tuition and fees. The fees figure above includes the average cost of additional campus-based fees. Your total costs will vary depending on your personal expenses and the campus you attend. All fees are subject to change without notice.

# Independent Colleges and Universities

## Association of Independent California Colleges and Universities

Aiccu.edu

- Independent Colleges and Universities**
  - i.e., Stanford, Cal Tech, Whittier College, Azusa Pacific, USC, Claremont, Concordia, etc.
  - 76 independent colleges and universities in California
  - Independent/private universities do not receive state funding therefore their “sticker price” is higher: approximately \$37,000+++ per year
  - ability to graduate in 4 years is slightly higher than at a public institution
  - some independent institutions such as Ivy League Schools, Stanford, Massachusetts Institute of Technology, and California Institute of Technology are **HIGHLY SELECTIVE**
    - it is important to research the individual college catalog and web sites for specific admission information
    - students who have taken a rigorous program in high school, including a-g requirements, AP/honors classes, been involved in leadership roles or athletics, have special interests or talents, have solid GPA and SAT/ACT scores, and have strong letters of recommendation, would likely be a candidate for selective private colleges or universities
  - transfer to many independent colleges is possible after completing freshman year at a community college or other institution

### Main AICCU Campuses by Region \*



\*See schools websites for satellite locations.



# Out-of-State - WUE

## Western Undergraduate Exchange

wiche.edu

- **WICHE/WUE**
  - Western Interstate Commission for Higher Education/Western Undergraduate Exchange
  - WUE is a regional tuition-reciprocity agreement that enables students from WICHE states to enroll in more than 150 participating two and four year public institutions at 150% of the enrolling institution's resident tuition.
  - not all majors are available at WUE rate
    - typically majors in high demand, such as nursing, are not offered at the WUE rate
  - the WUE reduced tuition rate is not automatically awarded to all eligible candidates
    - many institutions limit the number of new WUE awards each academic year, so apply early
- **Out of State Colleges**
  - there are over 2000 out of state institutions
    - be sure to know deadlines and tuition costs (you may be paying out-of-state tuition)
    - consult individual college websites for further information

Your ticket to affordable out-of-state college in the West.





# Dear Student: How to Find a College that Fits You...



Some students want to find the perfect college. The truth is, there's no such thing. You can find many colleges at which you'll be happy and get a great education. The college search is about exploring who you are and what you want and then finding colleges that will meet your goals. Still, you do need to narrow down the possibilities into a manageable list. Here are steps you can take to find colleges where you will thrive....

- **Keep an Open Mind** - Stay open to all possibilities
- **Decide What You Want in a College**
  - Ask yourself what's important to you, where you want to be and who you want to become. This will help you figure out what types of colleges will allow you to reach your goals. Here are some aspects to consider:
    - ✦ Size, location, distance from home, available majors and classes, housing options, makeup of the student body, available extracurricular activities, campus atmosphere
- **Think about what you want to accomplish in college.**
  - Do you want to train for a specific job or get a wide-ranging education?
  - If you have a major in mind, are the colleges you're considering strong in that area?
- **Don't limit your search.**
  - At the start of the college search process, you may rule out colleges because you think they are too expensive or too hard to get into, but this may not be the reality. Remember that financial aid can make college more affordable and colleges look at more than just grades and test scores.
- **Keep Perspective**
  - During your search, keep asking yourself questions about your preferences and goals. You are changing throughout high school, so your answers may change during the search process.
- **Do Your Homework**
  - Once you have a list of schools, it's time to do research. To learn more about the colleges you're considering, check out college guidebooks and the colleges' websites. Jot down your questions and get answers by:
    - ✦ Talking to your school counselor or teachers
    - ✦ Checking out colleges' student blogs, if available
    - ✦ Contacting college admission officials
    - ✦ Visiting college campuses, if possible

# FINANCING COLLEGE...



## SCHOLARSHIPS AND FINANCIAL AID



# Scholarships

## Local Scholarships

- **One application**
  - students complete one application and are considered for all local scholarships to which they qualify
- **Scholarships offered by organizations within the city of Downey**
  - amounts range from \$50 to \$2,000
- **Students compete against other Downey High School students**
  - unlike general scholarships where students compete against students from other schools, the local scholarship applicants are drawn from Downey High School students only
- **Student Selection based on:**
  - financial need, GPA, volunteer hours, community service, extracurricular activities, future profession and/or course of study

## General Scholarships

- **Not limited to Downey High School students**
  - Competitive
- **Multiple applications/research required**
  - College and Career Center (A201)
  - [www.fastweb.com](http://www.fastweb.com)
  - [www.collegenet.com/mach25](http://www.collegenet.com/mach25)
  - [www.collegeboard.com/pay](http://www.collegeboard.com/pay)
  - [www.scholarships.com](http://www.scholarships.com)
- **student qualifications differ depending on individual scholarships**



# **A scholarship or grant is FREE MONEY!!!**

You should NEVER have to pay to find, apply for, or receive a scholarship. Watch out for companies that make promises, charge you money to apply for or receive a scholarship!



# WHAT CAN YOU DO NOW?



## Get Involved in School!

- Encourage your child to participate in clubs , sports, and other extracurricular activities.



## Get Involved in the Community!

- Encourage your child to volunteer and participate in community events.



## Get Good Grades!

- Many scholarships recognize academic achievement.
- Encourage your student to get a competitive GPA.



# FINANCIAL AID



# Apply for Aid



## Apply for FAFSA (Free Application for Federal Student Aid) online:

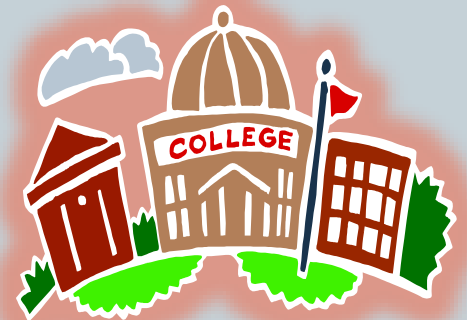
- ❖ FAFSA is used to apply for federal financial aid (grants, work-study, and loans)
- ❖ the process is **free/never pay to apply for federal financial aid**
- ❖ complete the FAFSA each year, starting October 1<sup>st</sup>
- ❖ get free information and help from the financial aid office at the college, university, or career school you plan to attend

**[www.fafsa.gov](http://www.fafsa.gov)**  
**online chat is available**  
**or call**  
**1-800-4-FED-AID**

# THE COST OF COLLEGE



- Let tuition concerns take a backseat when deciding where to apply. Consider the cost of college once you've gotten your acceptances, and you're ready to make your final decision.
- Some families won't even apply to schools with high price tags. **THAT'S A MISTAKE!**
- With financial aid awards, your ultimate out-of-pocket costs may be significantly less than the original price tag.
- The bottom line is that you won't know what your financial obligation will be until after you
  - apply for financial aid
  - receive that coveted acceptance letter
  - receive your award package





# Questions?

