



# 2012-13 School Quality Snapshot

**Doty Middle**

Downey Unified

10301 South Woodruff Ave., Downey, CA 90241

Grades Offered: 6-8

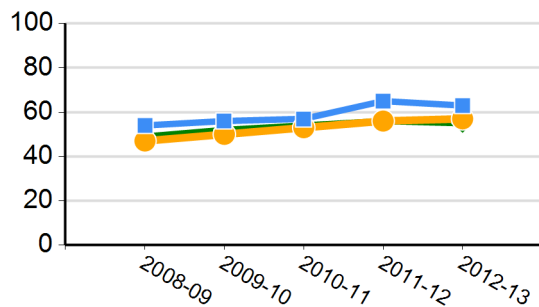
Enrollment: 1,438

Charter: No

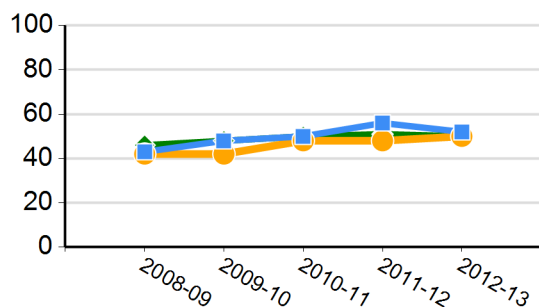
Title I Funded: Yes

CDS Code: 19-64451-6057616

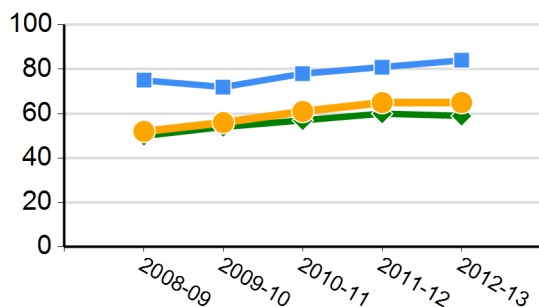
**CST English-language Arts Results**  
(percent proficient and above)



**CST Mathematics Results**  
(percent proficient and above)



**CST Science Results**  
(percent proficient and above)



## California's Academic Performance Index (API)

2013 Growth API	<b>833</b>
Growth from Prior to Current Year	<b>-6</b>
Met Schoolwide Growth Target	<b>Yes</b>
All Student Groups Met Target	<b>No</b>
2012 Base API State Rank	<b>7</b>
2012 Base API Similar Schools Rank	<b>8</b>

## API Subgroup Performance - 2013 API Growth

	Met Target	Growth
African American or Black		--
American Indian or Alaska Native		--
Asian		--
Filipino		--
Hispanic or Latino	<b>Yes</b>	<b>-4</b>
Native Hawaiian or Pacific Islander		--
White		--
Two or More Races		--
English Learners	<b>Yes</b>	<b>46</b>
Socioeconomically Disadvantaged	<b>Yes</b>	<b>1</b>
Students with Disabilities	<b>No</b>	<b>-7</b>

Green = Student group met target  
 Red = Student group did not meet target  
 Blue = Student group is not numerically significant  
 -- = Not enough students to report

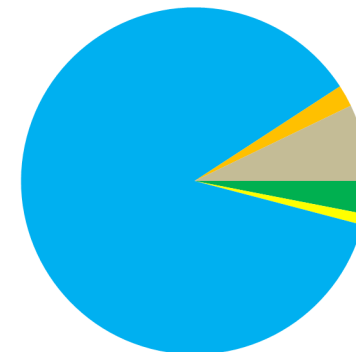
### CHART LEGEND:

■ SCHOOL ● DISTRICT ◆ STATE

**CST:** CA Standards Test    **CDS:** County-district-school

School and/or district information will not be displayed when data are not available or when data are representing fewer than 11 students.

**2012-13 Enrollment by Race/Ethnicity**

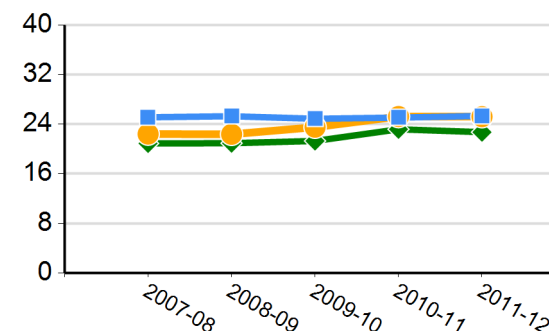


■ American Indian or Alaska Native    ■ Hispanic or Latino  
 ■ Asian    ■ African American or Black  
 ■ Native Hawaiian or Pacific Islander    ■ White  
 ■ Filipino    ■ Not Reported

**2012-13 Subgroup Enrollment**

English Learners	29%
Socioeconomically Disadvantaged	67%
Students with Disabilities	11%

**Average Class Size**





# 2012-13 School Quality Snapshot

## Doty Middle

Downey Unified

10301 South Woodruff Ave., Downey, CA 90241

Grades Offered: 6-8

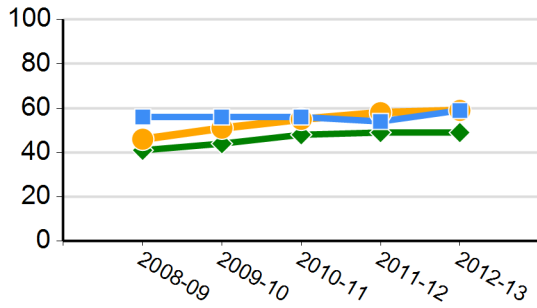
Enrollment: 1,438

Charter: No

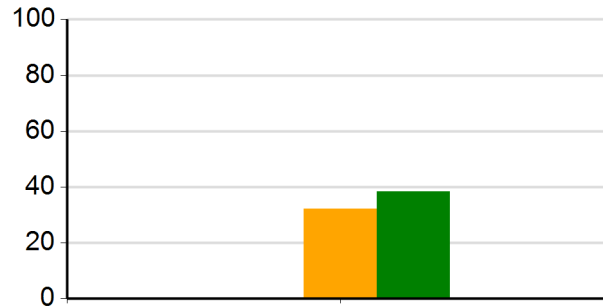
Title I Funded: Yes

CDS Code: 19-64451-6057616

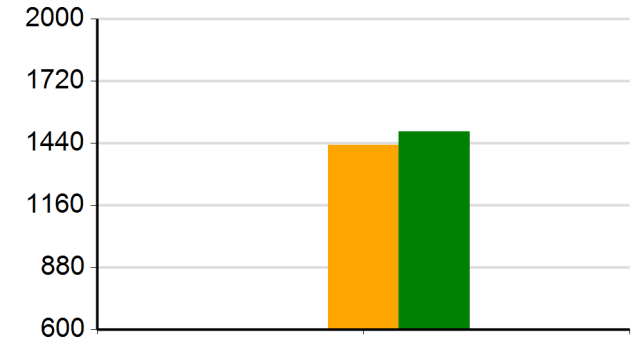
### CST History/Social Science Results (percent proficient and above)



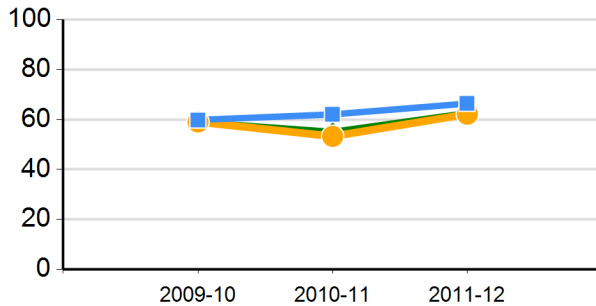
### Percentage of 2011-12 Graduates Meeting University of California "a-g" Requirements



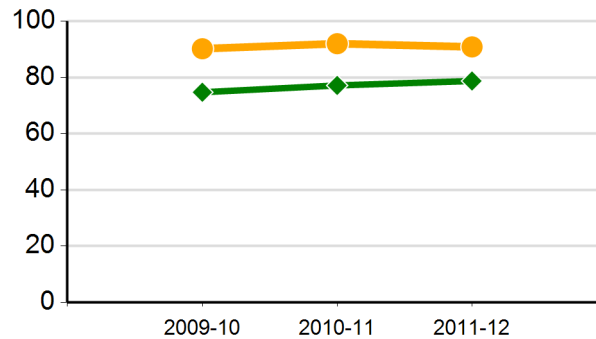
### 2011-12 Average SAT Score



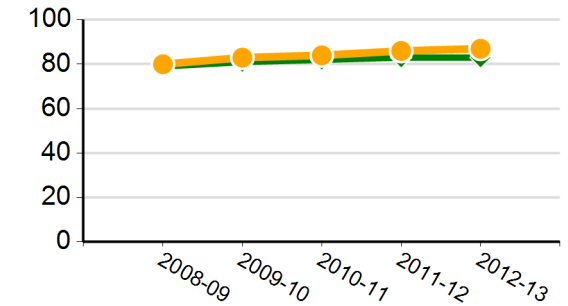
### Percentage of English Learners Making Progress in Learning English



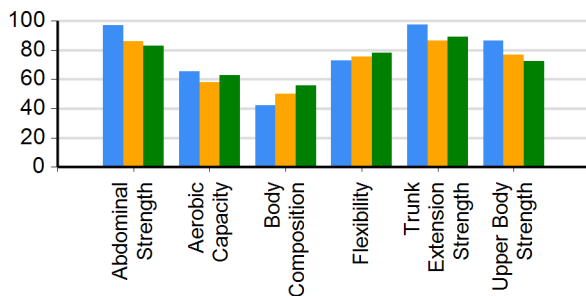
### Cohort Graduation Rate\*



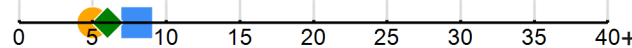
### CAHSEE English-Language Arts Grade 10 Passing Rate



### Percentage of Students in the Healthy Fitness Zone in 2011-12



### 2011-12 Suspensions and Expulsions as a Percentage of Enrolled Students



#### CHART LEGEND:

■ SCHOOL ● DISTRICT ◆ STATE

\* Only three years of data are available

CAHSEE: CA High School Exit Examination

CST: CA Standards Test

School and/or district information will not be displayed when data are not available or when data are representing fewer than 11 students.

### CAHSEE Mathematics Grade 10 Passing Rate

